

LEADERSHIP TOOLS

The most important tools and traits you need to be an effective leader

INTEGRITY

In leadership, integrity is one of the most important traits. Your followers need to be able to trust you. You don't want them to second guess every decision you make. It leads to fighting over trivial decisions, which only wastes time and resources.



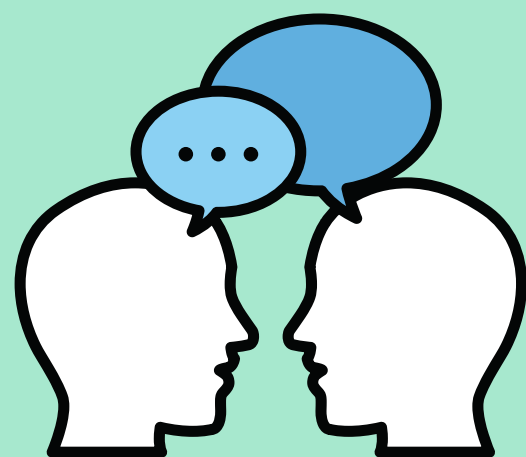
OPEN MINDEDNESS



While leading, you need to be open to new ideas from others. They can have ideas that make things simpler and faster. You shouldn't reject their ideas just because you're the "boss". It can lead to great frustration when people's ideas get shot down, for no good reason.

COMMUNICATION

In leadership, communication is incredibly important. You need to communicate effectively what needs to be done before your followers can actually do it. If you don't communicate properly, then people do the wrong thing, and their work needs to be done twice, which is incredibly demoralizing.



EMPATHY

As a leader, it's important to empathize with those who you lead. It helps you better understand how they think to assign them to tasks they'd be more effective at.

THANK YOU

Thank you for reading, and make sure to use these tools so you can lead effectively.